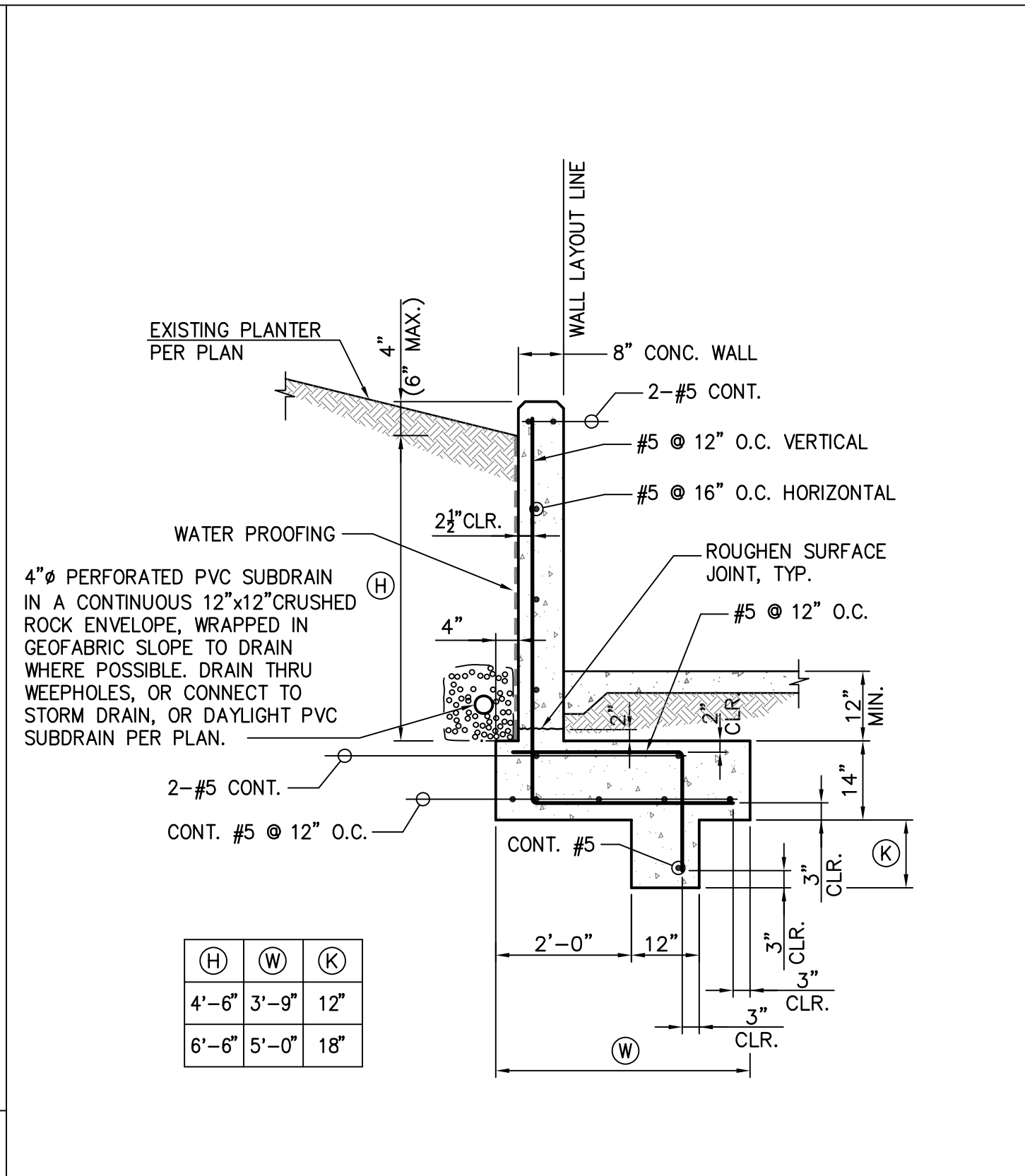


FLAG POLE DETAIL

SCALE:
NO SCALE

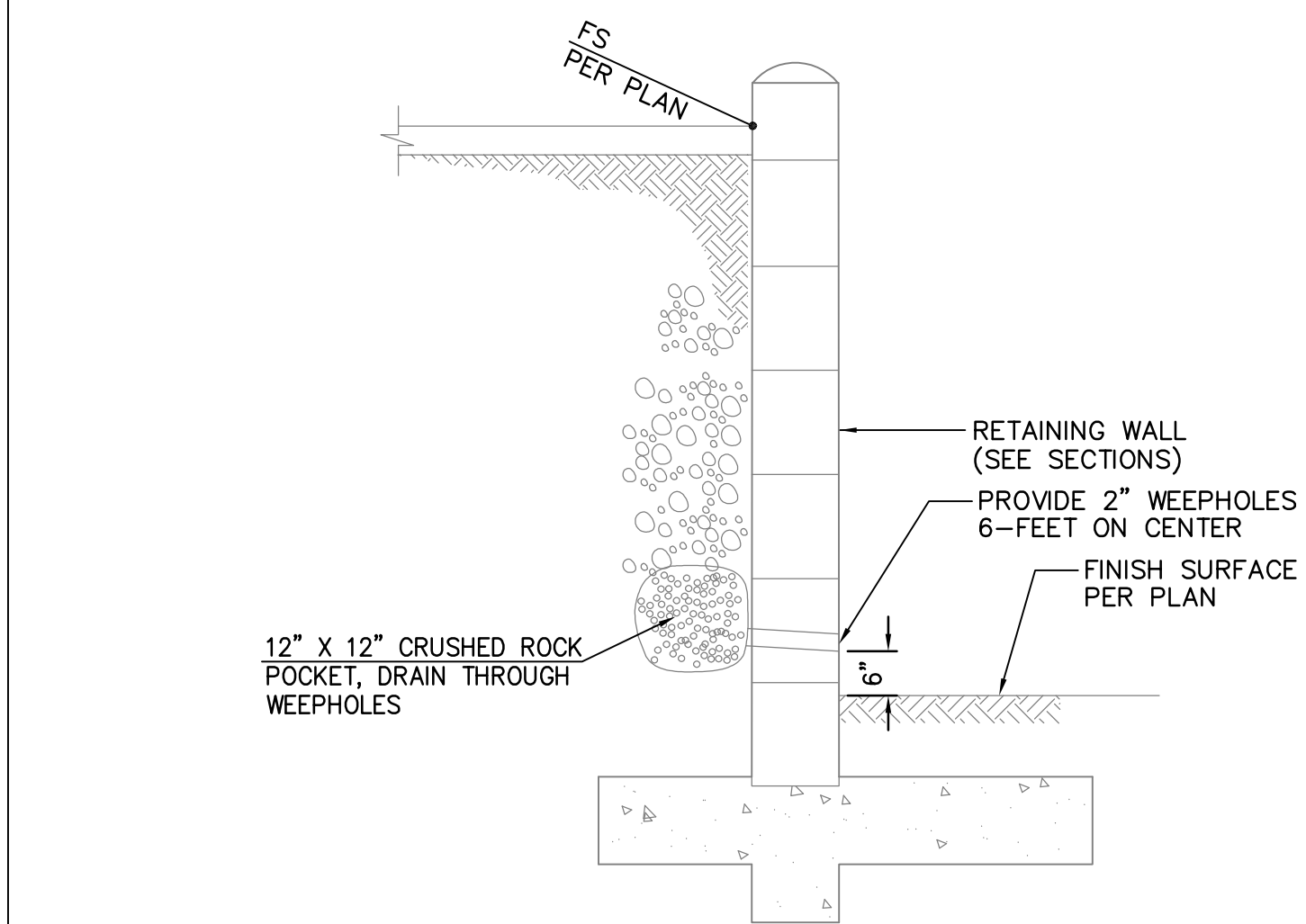
9



CONCRETE RETAINING WALL DETAIL

SCALE:
NO SCALE

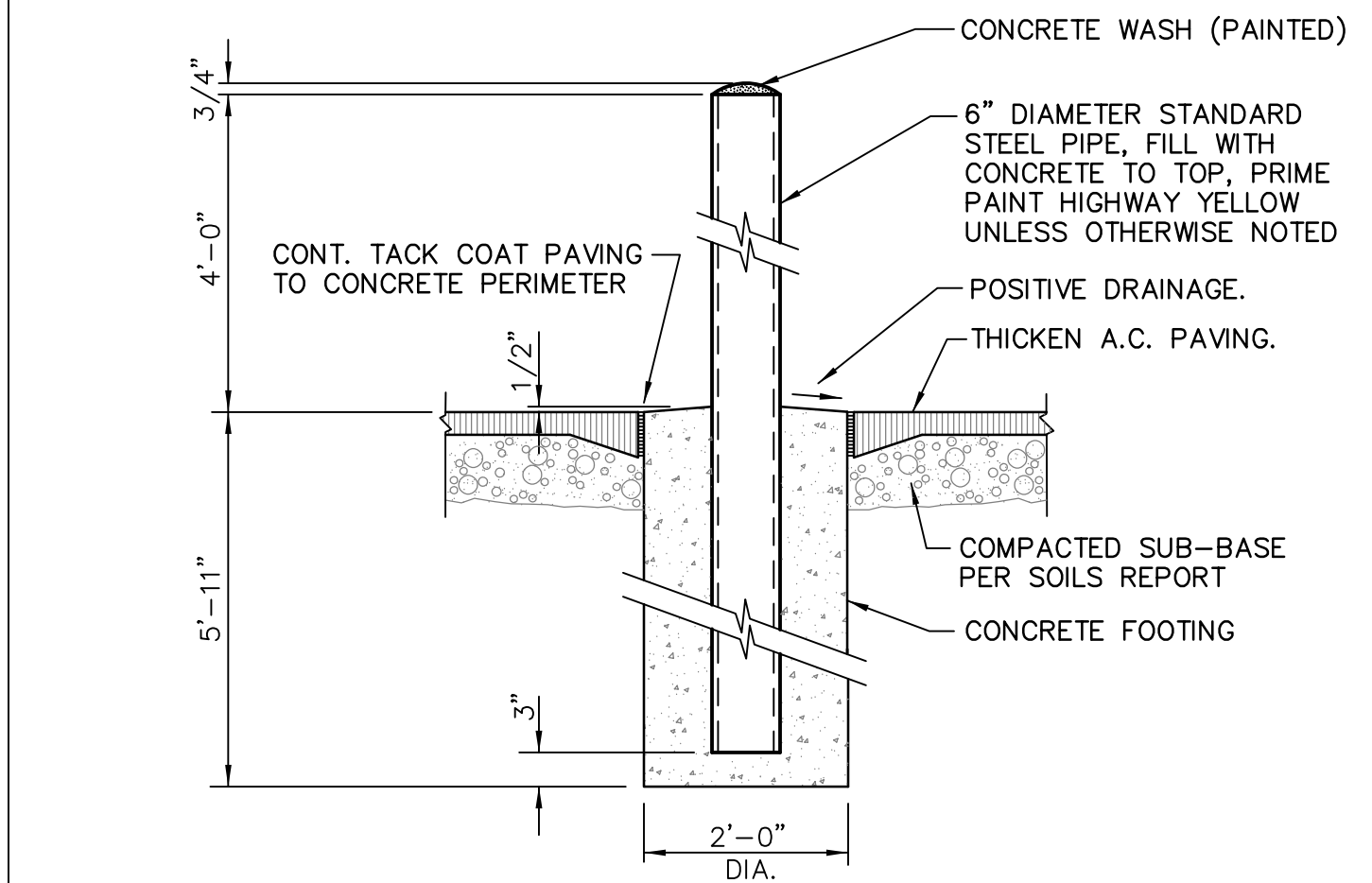
6



TYPICAL WALL DRAINAGE DETAIL

SCALE:
NO SCALE

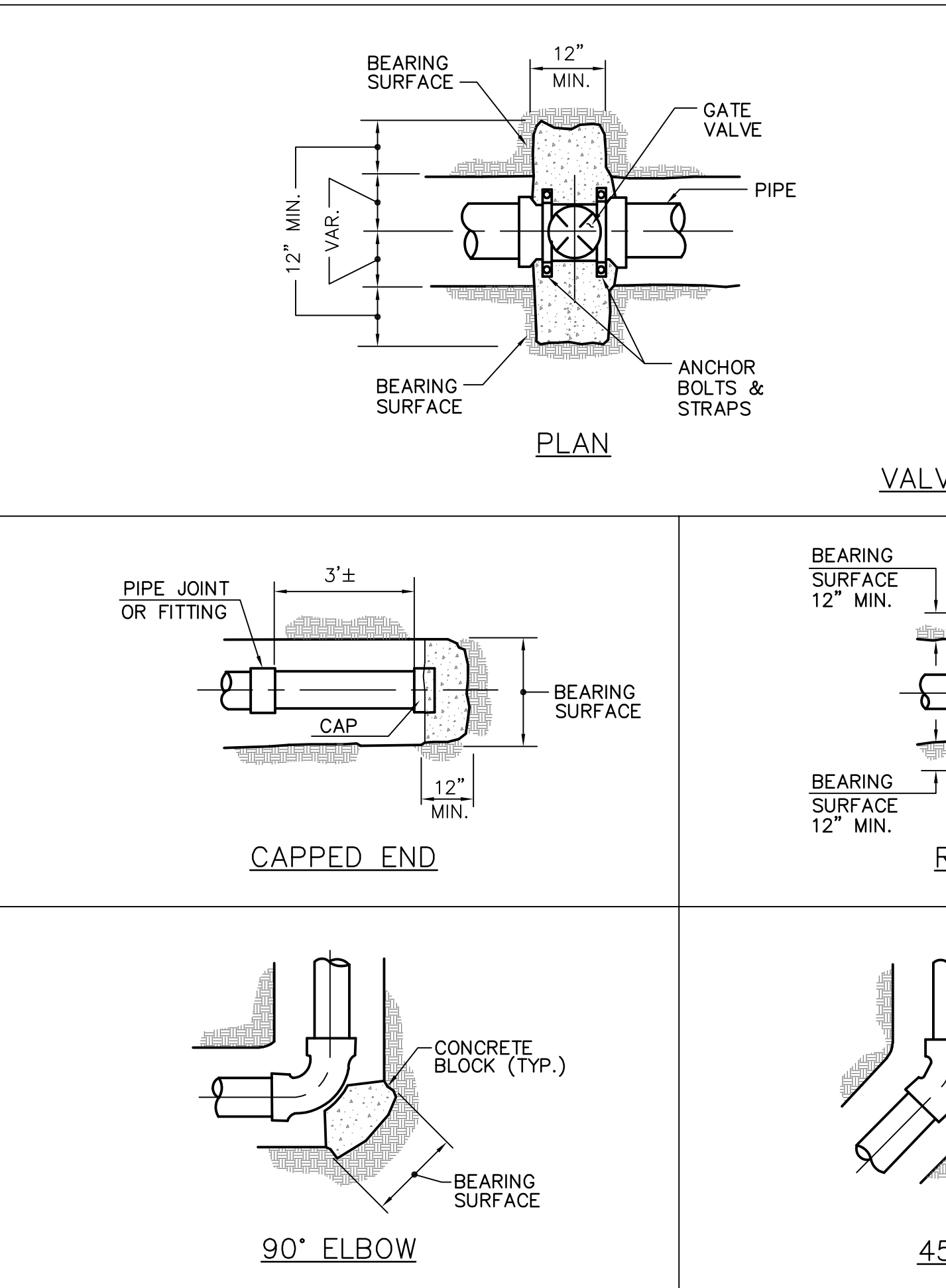
7



BOLLARD DETAIL

SCALE:
NO SCALE

8



NOTES:

1. ALL THRUST/ANCHOR BLOCKS SHALL BEAR AGAINST UNDISTURBED SOIL.
2. CONCRETE SHALL ATTAIN A MINIMUM COMPRESSIVE STRENGTH OF 2000 P.S.I. AT 28 DAYS.
3. ALL ANCHOR RODS AND ANCHOR BOLTS SHALL BE MINIMUM 1/2" DIA. & ANCHOR STRAPS SHALL BE 1/4" X 2" BAR.
4. THRUST BLOCK DESIGN IS BASED ON A WATER PRESSURE OF 150 P.S.I., AND A MAXIMUM ALLOWABLE SOIL BEARING VALUE OF 2000 P.S.F. FOR MAXIMUM SOIL BEARING VALUES OF 1000 P.S.F. INCREASE BEARING SURFACES BY A FACTOR OF 2.
5. THE RATIO OF WIDTH TO HEIGHT OF THRUST BLOCKS SHALL NOT EXCEED 1 TO 1.
6. ANCHOR BLOCKS FOR VERTICAL BENDS SHALL BE CONSTRUCTED PER SPECIAL DETAIL AS REQUIRED.
7. THRUST BLOCKS SHALL BE OF A CONCRETE MIX NOT LEANER THAN ONE PART CEMENT, TWO AND ONE HALF PARTS SAND, AND FIVE PARTS STONE (NFPA 24 10.8.2.2).

THRUST BLOCK BEARING AREAS - S.F.

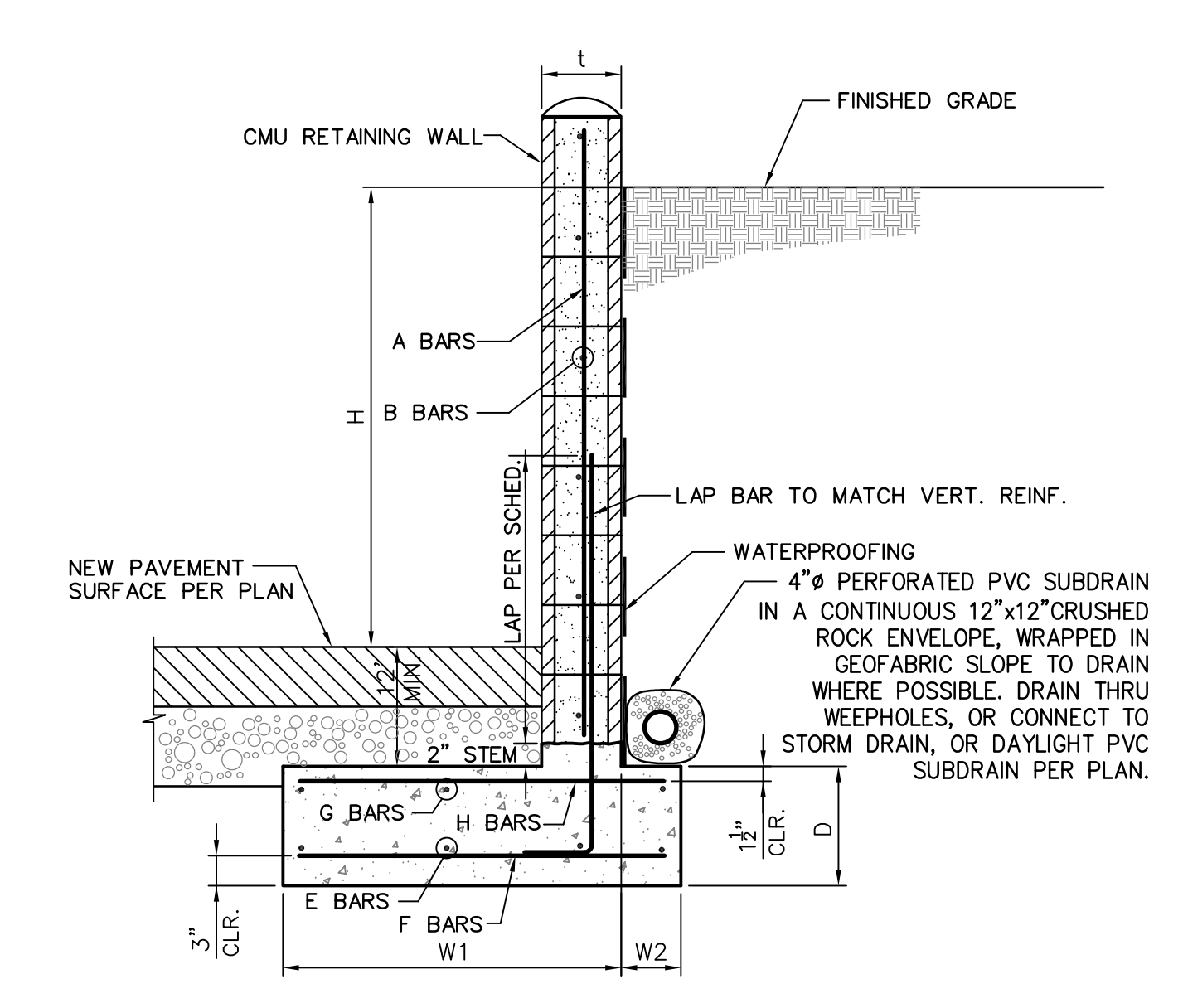
MAIN SIZE	TEE *	BEND			
		90°	45°	22.5°	11.25°
4"	4	2	2	2	2
6"	4	5	3	2	2
8"	5	8	5	3	2
10"	9	13	7	4	3
12"	13	18	10	5	3

* INCLUDES TEES, PLUGS, CAPS, HYDRANTS & VALVES.

THRUST AND ANCHOR BLOCK DETAILS

SCALE:
NO SCALE

1



RETAINING WALL SCHEDULE

H	t	D	W1	W2	A BARS	B BARS	E BARS	F BARS	G BARS	H BARS
< 2'-6"	8"	1'-0"	3'-0"	6"	*5#16"o.c.	*5#16"o.c.	*5#16"o.c.	*5#16"o.c.	*5#16"o.c.	*5#16"o.c.
< 4'-0"	8"	1'-0"	3'-0"	6"	*5#16"o.c.	*5#16"o.c.	*5#16"o.c.	*5#16"o.c.	*5#16"o.c.	*5#16"o.c.
< 6'-0"	8"	1'-0"	3'-0"	6"	*5#16"o.c.	*5#16"o.c.	*5#16"o.c.	*5#16"o.c.	*5#16"o.c.	*5#16"o.c.

NOTES:

1. CONTRACTOR IS RESPONSIBLE FOR THE DESIGN AND CONSTRUCTION OF ANY TEMPORARY SHORING REQUIRED.
2. LAP SPLICE LENGTH PER SCHEDULE ON DETAIL 3 HEREON.
3. CONTROL JOINTS PER DETAIL 3 HEREON.
4. TYP. CMU WALL INTERSECTION/CORNER PER DETAIL 3 HEREON.

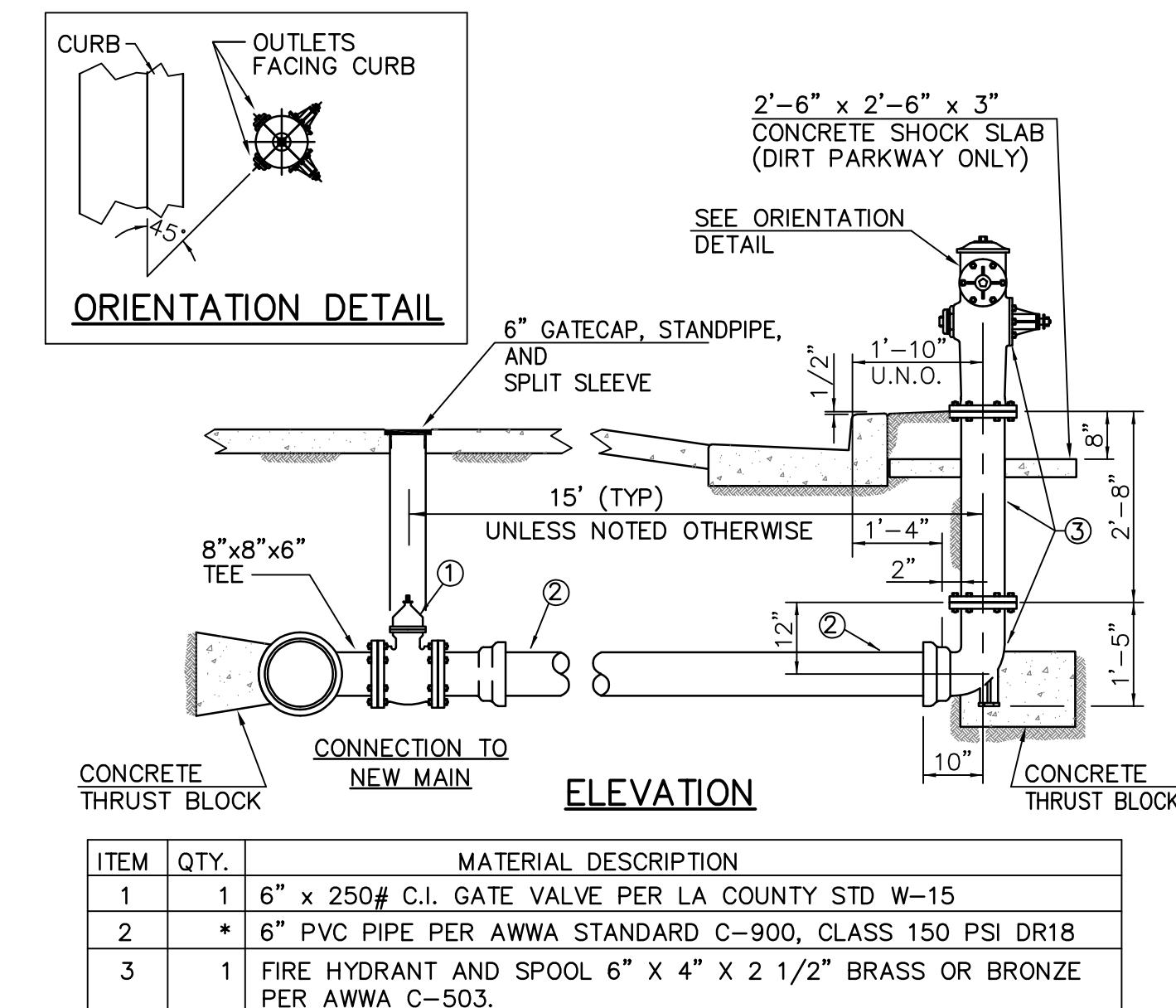
CMU RET. WALL DETAIL & SCHEDULE

SCALE:
NO SCALE

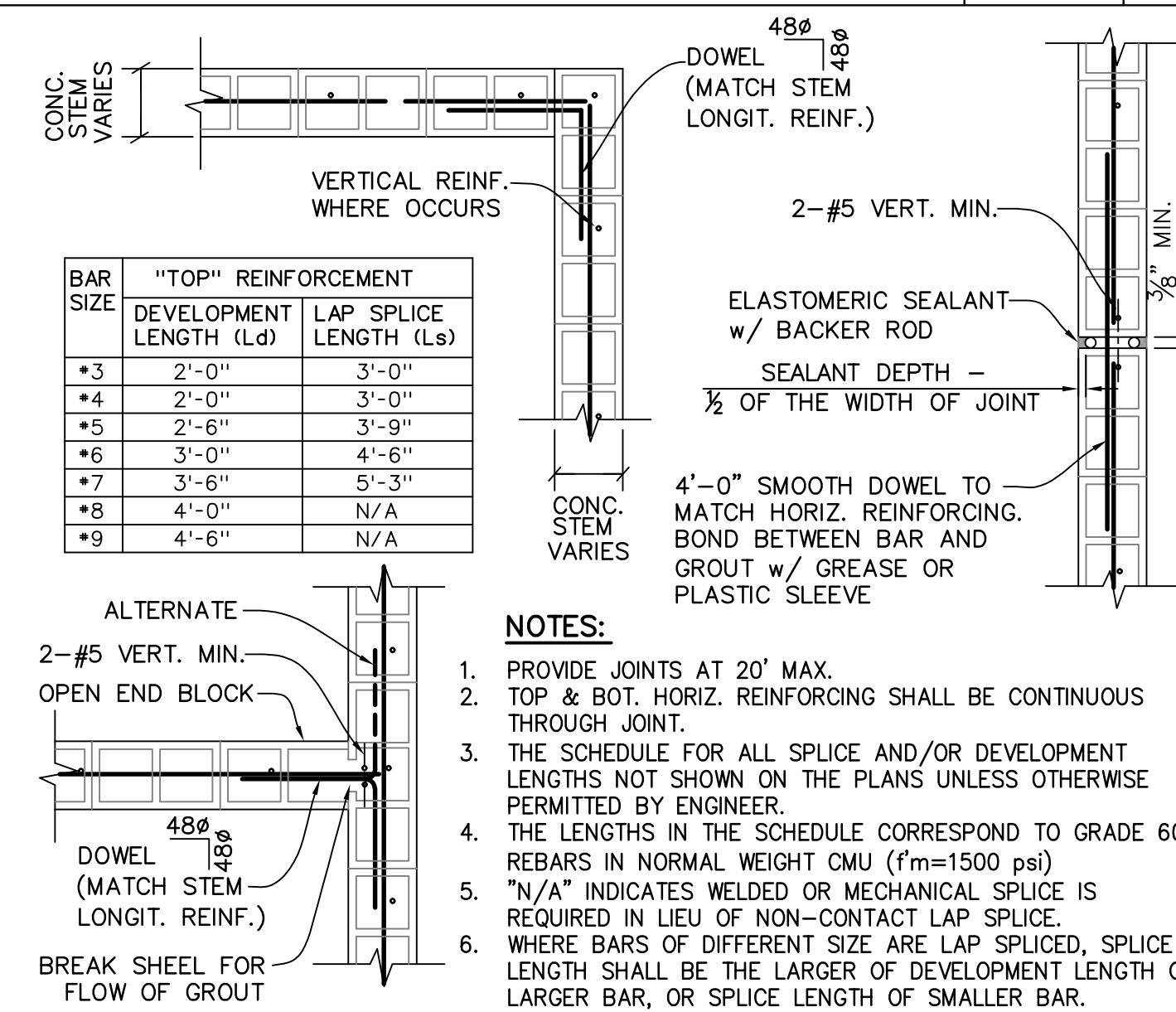
DOUBLE-OUTLET FIRE HYDRANT INSTALLATION DETAIL

SCALE:
NO SCALE

2



ITEM	QTY.	MATERIAL DESCRIPTION
1	1	6" x 250# C.I. GATE VALVE PER LA COUNTY STD W-15
2	*	6" PVC PIPE PER AWWA STANDARD C-900, CLASS 150 PSI DR18
3	1	FIRE HYDRANT AND SPOOL 6" x 4" x 2 1/2" BRASS OR BRONZE PER AWWA C-503.



NOTES:

1. PROVIDE JOINTS AT 20' MAX.
2. TOP & BOT. HORIZ. REINFORCING SHALL BE CONTINUOUS THROUGH JOINT.
3. THE SCHEDULE FOR ALL SPLICE AND/OR DEVELOPMENT LENGTHS NOT SHOWN ON THE PLANS UNLESS OTHERWISE PERMITTED BY ENGINEER.
4. THE LENGTHS IN THE SCHEDULE CORRESPOND TO GRADE 60 REBARS IN NORMAL WEIGHT CMU (f'm=1500 psi).
5. "N/A" INDICATES WELDED OR MECHANICAL SPLICE IS REQUIRED IN LIEU OF NON-CONTACT LAP SPLICE.
6. WHERE BARS OF DIFFERENT SIZE ARE LAP SPLICED, SPLICE LENGTH SHALL BE THE LARGER OF DEVELOPMENT LENGTH OF LARGER BAR, OR SPLICE LENGTH OF SMALLER BAR.

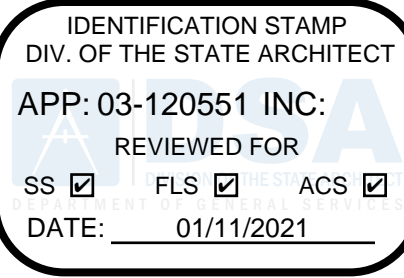
STEP FOOTING

SCALE:
NO SCALE

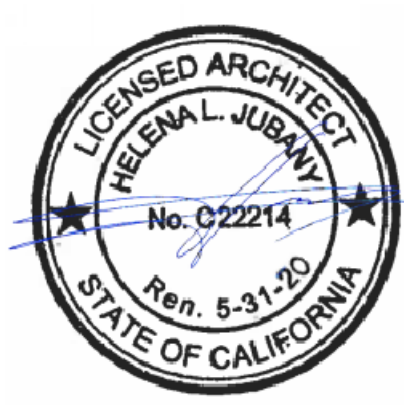
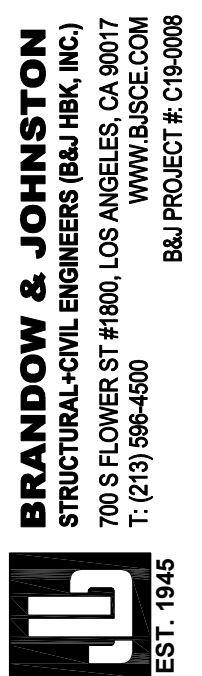
CMU WALL DETAILS

SCALE:
NO SCALE

3



REVISIONS



NORWALK LA MIRADA UNIFIED SCHOOL DISTRICT
LA MIRADA HIGH SCHOOL NEW FOOTBALL
STADIUM PROJECT

DSA # 03-120551



NAC NO. 161-19015
DATE 12/10/2020

DSA SUBMISSION

TYPICAL DETAILS

C2.02